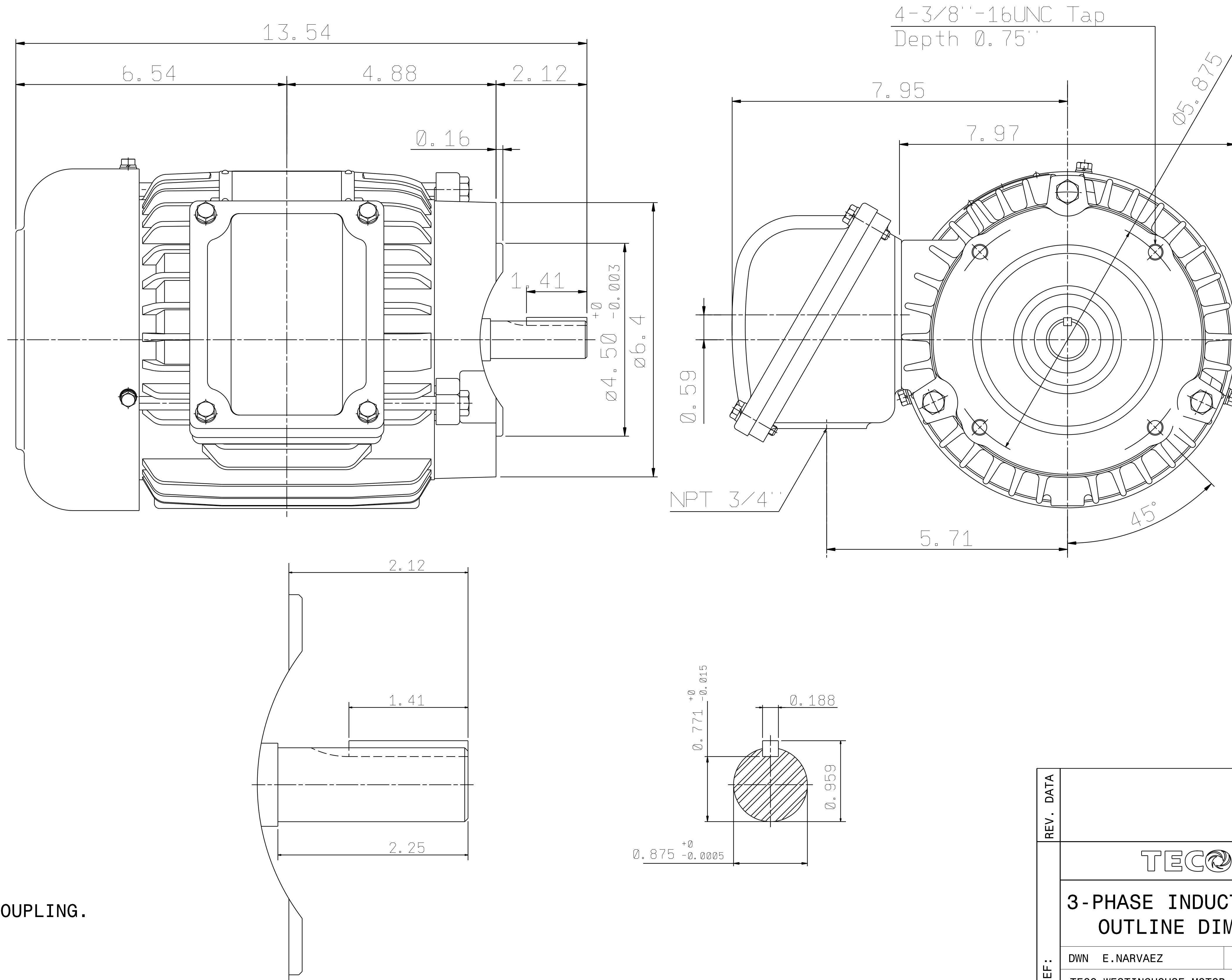


CATALOG #	TYPE	FRAME	OUTPUT		POLE	SYN. SPEED R.P.M.	VOLTAGE V.	Hz.	TIME RATING	INSULATION CLASS	SERVICE FACTOR	BEARINGS		WEIGHT LBS
			HP	KW								DE	NDE	
XPV0016C	AEUHXG	145TC	1	.75	6	1200	230/460	60	CONT.	F	1.15	6205ZZ	6205ZZ	75

TOTALLY ENCLOSED FAN-COOLED TYPE. SQUIRREL CAGE MOTOR



- NOTES:
1. DIMENSIONS IN INCH.
 2. ENCLOSURE: IP55.
 3. FOR DIRECT FLEXIBLE COUPLING.
 4. EXPLOSION PROOF:
CLASS I GROUP D AND
CLASS II GROUP E,F,G.

REF:	REV. DATA			
	TECO Westinghouse			REV NO 01
	3-PHASE INDUCTION MOTOR OUTLINE DIMENSIONS			DWG NO. XPV0016C
	DWN E.NARVAEZ	101218	APPD S.GROHOSKY	101218
TECO-WESTINGHOUSE MOTOR COMPANY		ROUND ROCK, TEXAS USA		